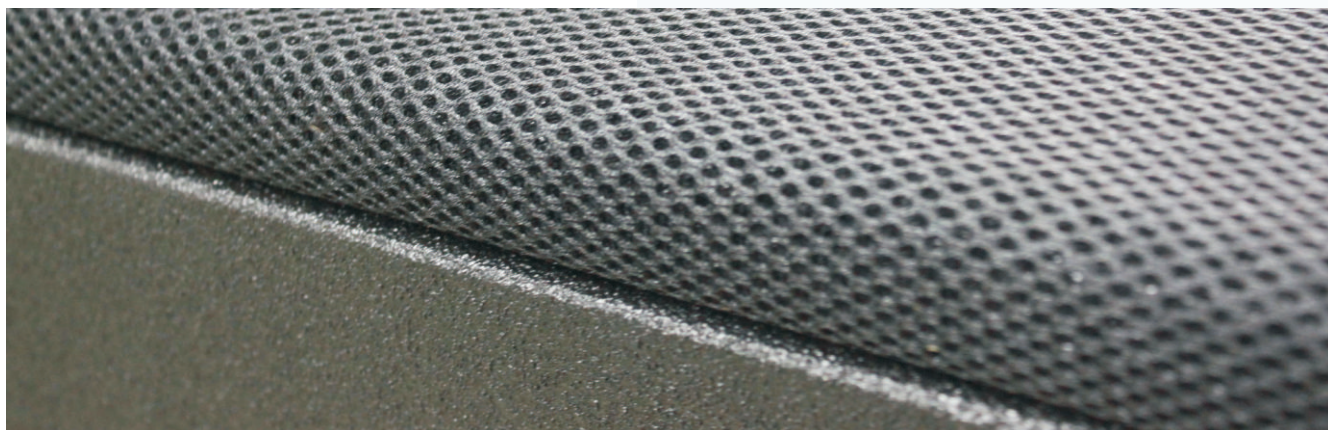


NEW DUAL 12" LINE ARRAY

KAMA

TP-980



Neodymium



High power



Ideal system



LINE ARRAY

T echnical specifications

Type

Compact three-way bi-amped
line array element

Frequency Response

50Hz-19kHz+/-3dB, -10dB@48Hz

Drivers

Two 12" /3" voice coil NEO LF drivers
Two 10" NEO MF driver
Two 1.4" exit NEO HF compression drivers

Rated Power(RMS)

LF:800W/MF+HF:650W(RMS)

Recommended Amplifier

LF: 800-1600W into 8 ohms
HF+MF: 650-1300 into 8 ohms

Sensitivity(1W/1m)

LF:102dB/MF+HF:106dB @ 1m/1w

Maximun SPL

138dB continuous, 144dB peak

Nominal Impedance

LF:6 ohms/MF+HF:8ohms

Dispersion(-6dB)

90°horizontal,7°vertical;
120°horizontal@-10dB

Crossover

250Hz

Finish

Textured black paint

Protective Grille

Black perforated steel

Connectors

2×Neutrik speakon NL 4

Fittings

Proprietary rigging system

Dimensions

(W)1100mmx(H)371mmx(D)751mm

Weight

72 KG



KAMA TP-980

incorporates two 12"/3" VC neodymium LF woofers, two

10"/3" VC neodymium MF drivers and two 1.4" exit neodymium compression drivers on an advanced horn that has 16 ports to equalize the path lengths and, with 90°constant directivity horizontal coverage(having 0- to 7-degree splay between adjacent units), it is a 3-way bi-amped line array element with a sophisticated built-in X-over network where proper EQ's and Phase are set, the mids are loaded into its own horn in separate chamber.



F eatures

- * Compact, high performance three-way line array element
- * Extremely high power-to-size ratio
- * Optimized line array behavior provides consistent response over long throws
- * Sanding sealer + high gloss black.

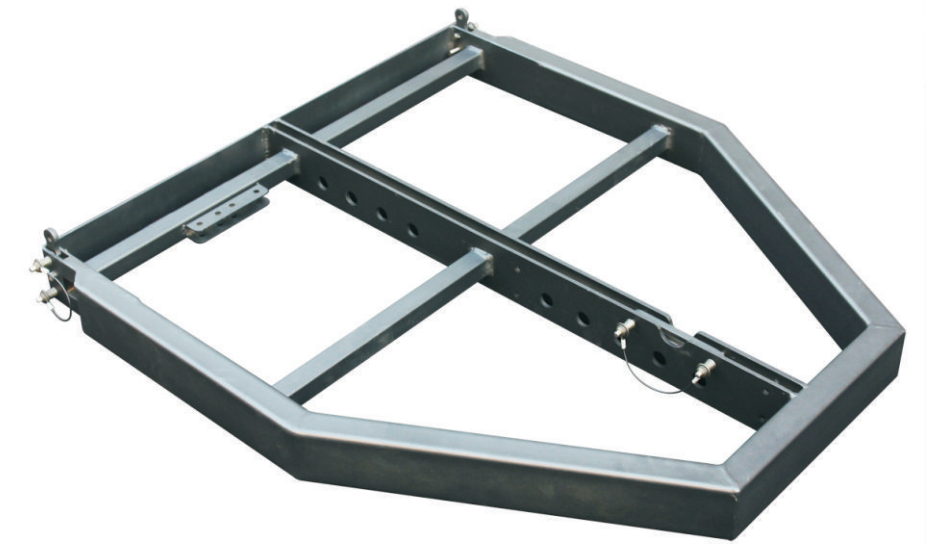
A pplications

- * Touring sound reinforcement
- * Stadiums, arenas, concert halls and theaters
- * Medium/large-scale events

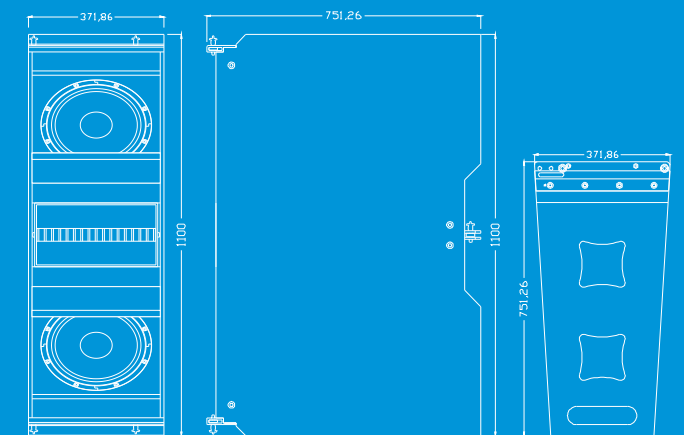
KAMA TP-980

NEW

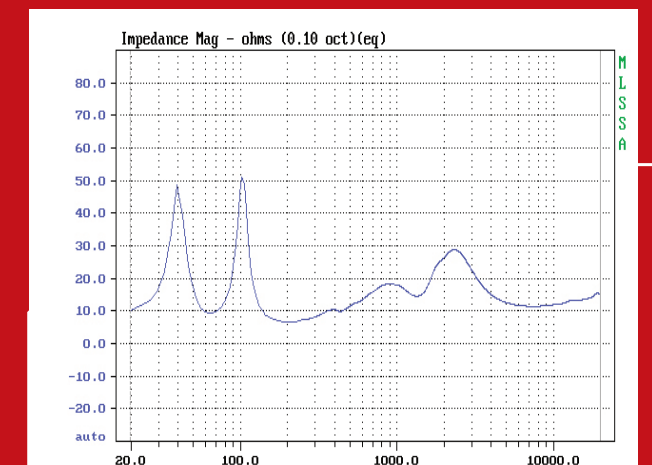
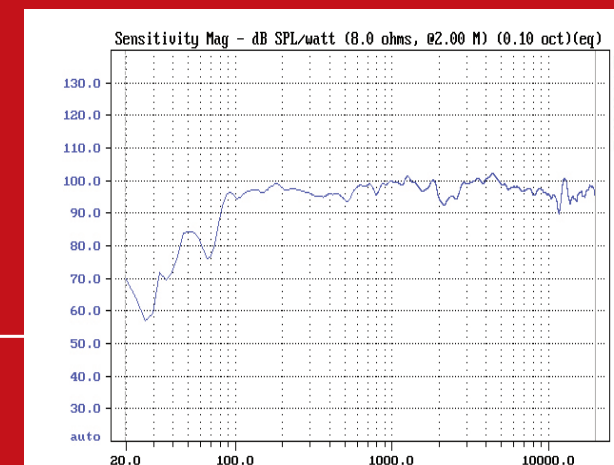
Accessories



Drawing



Frequency



Impedance