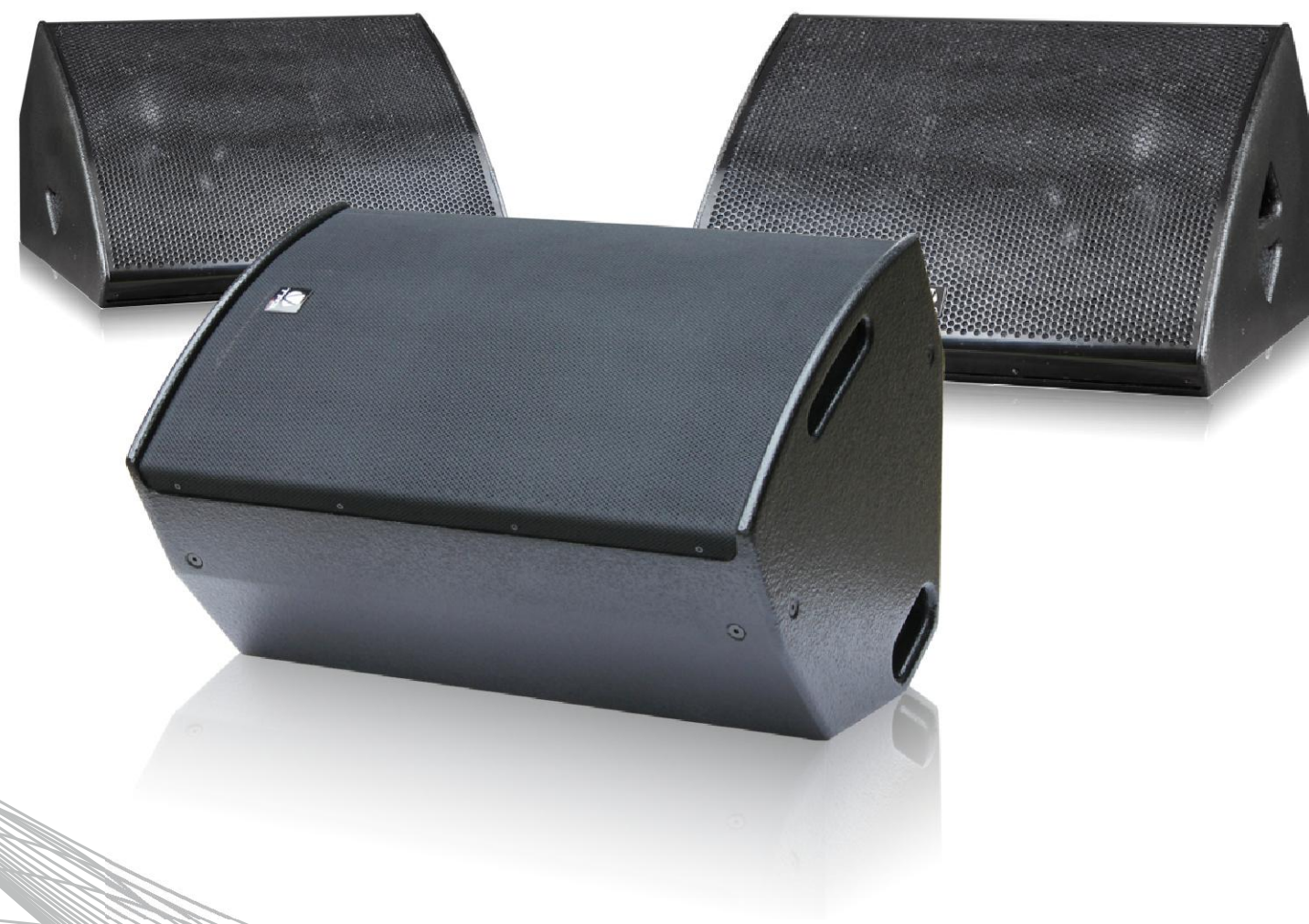


# MA SERIES



# MA SERIES

## FULL RANGE

### MA-12



The MA-12 is a low profile, floor monitor cabinet housing a 12" woofer and a 1" exit compression driver. Equipped with flush handles, steel grille and Speakon NL4 connectors.



#### Technical specifications

##### Type

Compact two-way passive monitor

##### Frequency Response

60Hz-20kHz±3dB,-10dB@ 55Hz

##### Drivers

1x12"/3" VC LF driver,  
1x1" exit HF compression driver

##### Rated Power(RMS)

350W

##### Recommended Amplifier

350W-700W into 8ohms

##### Sensitivity(1W/1m)

98dB

##### Maximun SPL

123dB continuous, 129dB peak

##### Nominal Impedance

8 ohms nominal

##### Dispersion(-6dB)

80°horizontal, 50°vertical

##### Crossover

2kHz Passive

##### Finish

Textured black paint

##### Protective Grille

Black perforated steel

##### Connectors

2x Neutrik speakon NL4

##### Fittings

Top hat fitting

##### Dimensions

(W)398mmx(H)572mmx(D)336mm

##### Weight

21KG



# MA SERIES

### MA-15



The MA-15 is a low profile, floor monitor cabinet housing a 15" woofer and a 1.4" exit compression driver. Equipped with flush handles, steel grille and Speakon NL4 connectors.

#### Technical specifications

##### Type

Compact two-way passive monitor

##### Frequency Response

50Hz-20kHz±3dB,-10dB@ 45Hz

##### Drivers

1x15"/3" VC LF driver,  
1x1.4" exit HF compression driver

##### Rated Power(RMS)

450W

##### Recommended Amplifier

450W-900W into 8ohms

##### Sensitivity(1W/1m)

99dB

##### Maximun SPL

124dB continuous, 130dB peak

##### Nominal Impedance

8 ohms nominal

##### Dispersion(-6dB)

80°horizontal, 50°vertical

##### Crossover

1.2kHz Passive

##### Finish

Textured black paint

##### Protective Grille

Black perforated steel

##### Connectors

2x Neutrik speakon NL4

##### Fittings

Top hat fitting

##### Dimensions

(W)567mmx(H)690mmx(D)456mm

##### Weight

31KG



# MA SERIES

## FULL RANGE

M-15



M-15 is a two-way passive loudspeaker. The low/mid section comprises a 15 inch neodymium bass driver, the high section includes a 1.4 inch neodymium HF driver assembled in a coaxial configuration. The M-15 provides a very coherent acoustic field with 60° conical coverage. The enclosure comprises three angles side, 15°, 30° and 45° for stage monitor application. As a main F.O.H the M-15 is meant for vocal applications, stage monitoring or distributed sound. The M-15 is also ideal for distributed sound reinforcement and can be used in medium power front-of-house (FOH) applications for theatres, clubs, multi-purpose venues or corporate events. M-15 system has one rectangular acoustic air outlet, constructed by 18-layer birch plywood and finished in black textured paint with perforated steel grille backed with acoustic foam. Multiple rigging points for wall, ceiling and truss mount. Pole mount socket and flush handles.

### Technical specifications

#### Type

Compact two-way coaxial speaker system

#### Frequency Response

50Hz-20kHz±3dB,-10dB@ 45Hz

#### Drivers

1x15"/3" VC LF driver,  
1x1.4" exit HF compression driver

#### Rated Power(RMS)

450W

#### Recommended Amplifier

450W-900W into 8 ohms

#### Sensitivity(1W/1m)

98dB

#### Maximun SPL

123dB continuous,129dB peak

#### Nominal Impedance

8 ohms nominal

#### Dispersion(-6dB)

60°

#### Crossover

1.2kHz Passive

#### Finish

Textured black paint

#### Protective Grille

Black perforated steel

#### Connectors

2x Neutrik speakon NL4

#### Fittings

12xM8 threaded inserts

#### Dimensions

(W)430mmx(H)712mmx(D)384mm

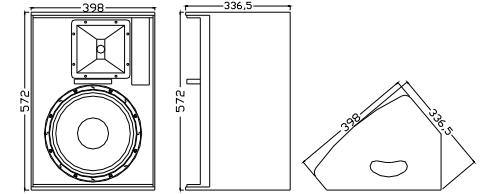
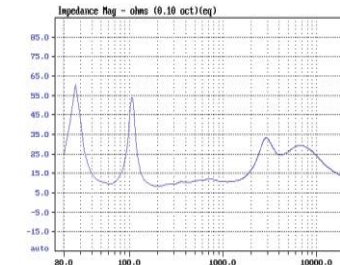
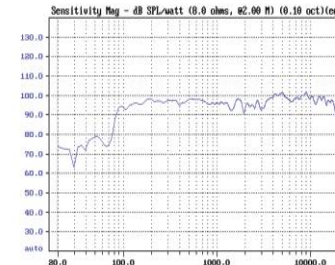
#### Weight

22.5KG

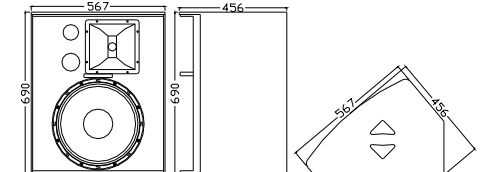
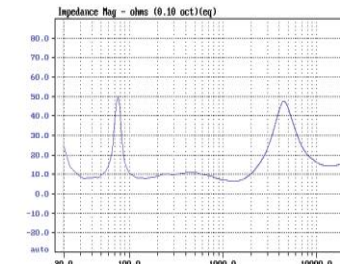
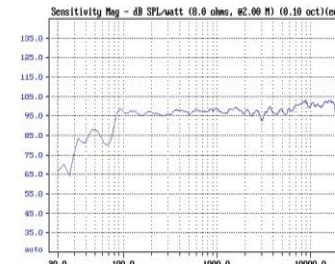


# DATASHEET

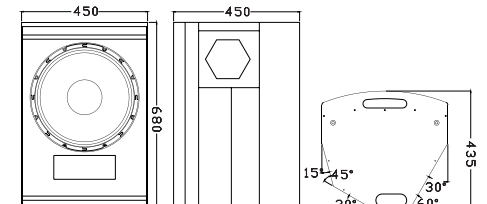
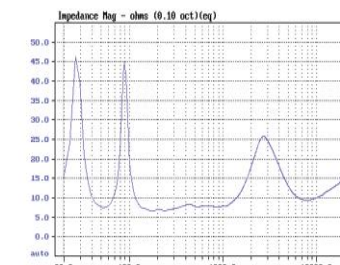
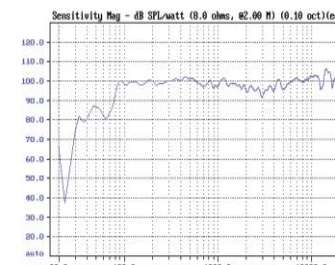
## FREQUENCY IMPEDANCE DRAWINGS



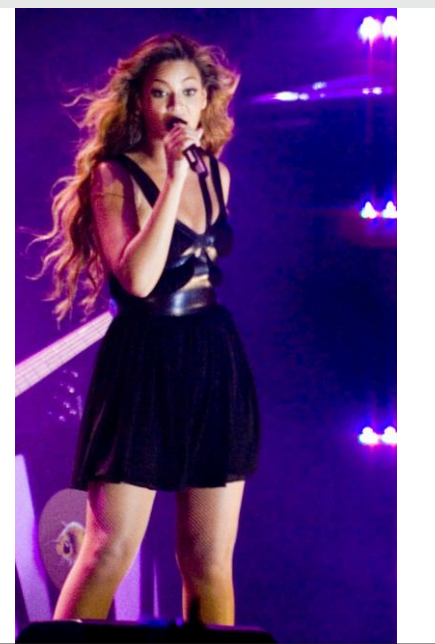
MA-12



MA-15



M-15



MA SERIES